



NORTH CAPITOL STREET

SCALE GATE ROAD

HAREWOOD ROAD

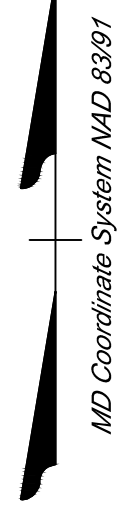
EXISTING HERITAGE TREE

EXISTING TREE COVER TO REMAIN, TYP.

SOLAR PANELS, TYP.

POLLINATOR AREAS

PROPOSED LANDSCAPE BUFFER



TIMMONS GROUP . . .

THE CATHOLIC UNIVERSITY OF AMERICA
WASHINGTON DC
OVERALL LANDSCAPE PLAN

THIS DRAWING PREPARED AT THE
TIMMONS GROUP OFFICE
1054 31st St NW, Washington, DC 20007
TEL: 202.9.2245 WWW.TIMMONS.COM

YOUR VISION ACHIEVED THROUGH OURS.

DATE	REVISION DESCRIPTION
12/17/2021	

DRAWN BY
S. STOCKTON

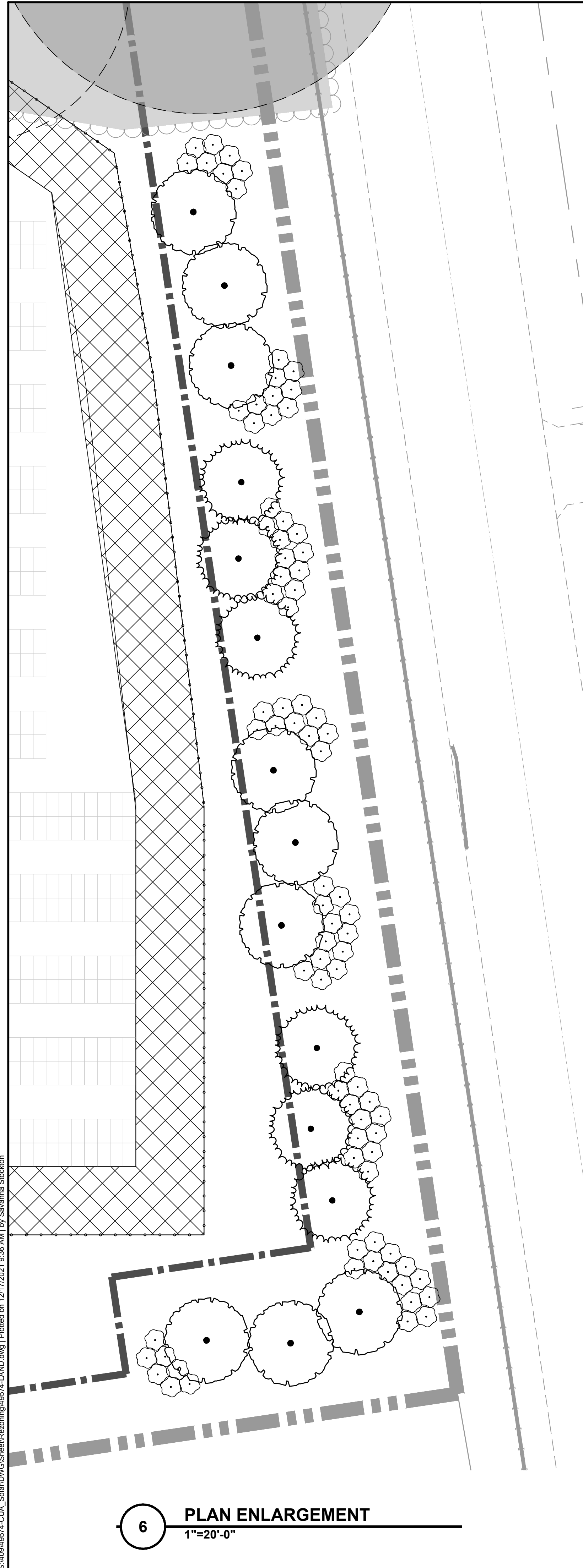
DESIGNED BY
J. CRUZ

CHECKED BY
T. LOWER

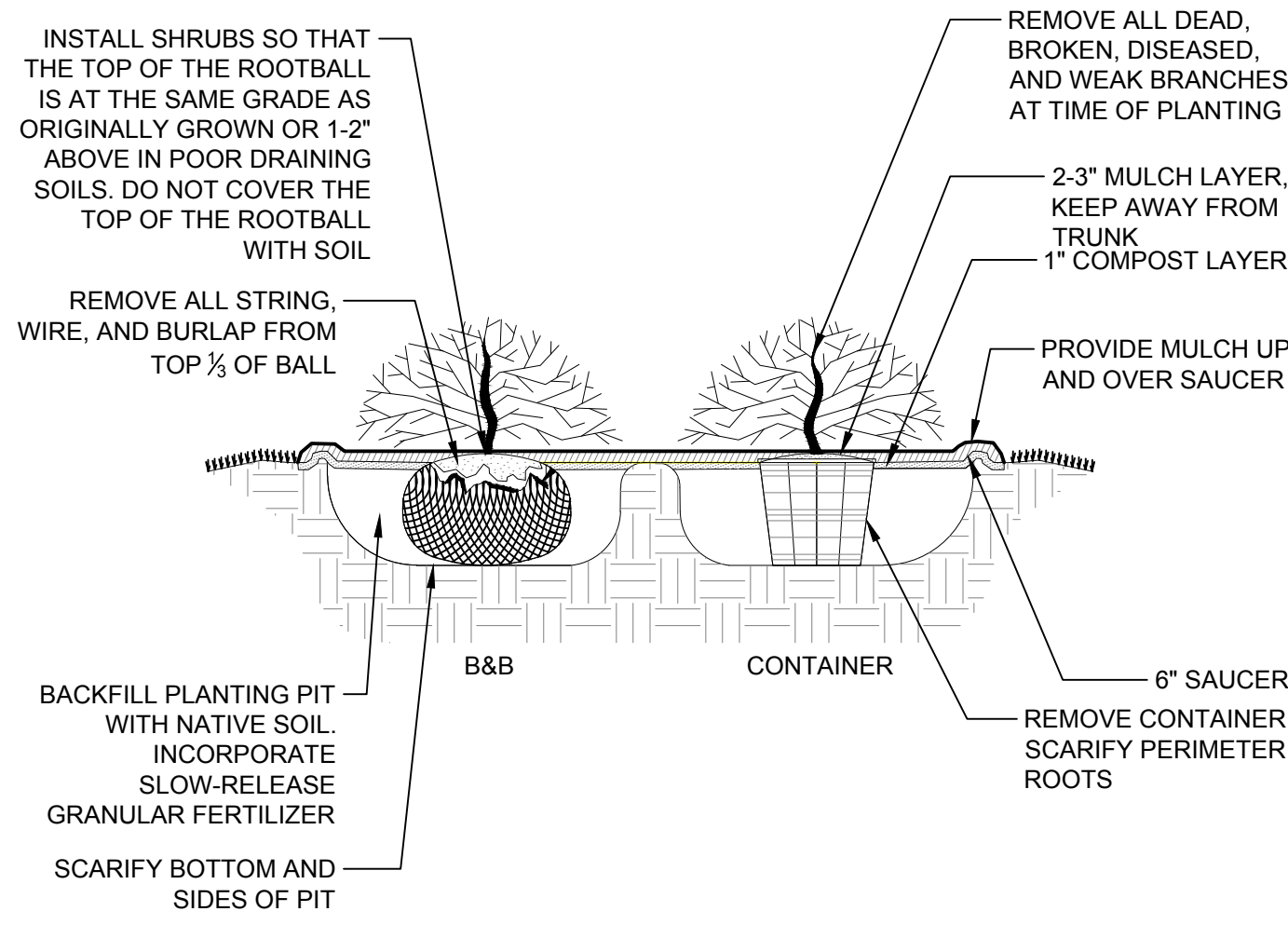
SCALE
1" = 70'

JOB NO.
49574

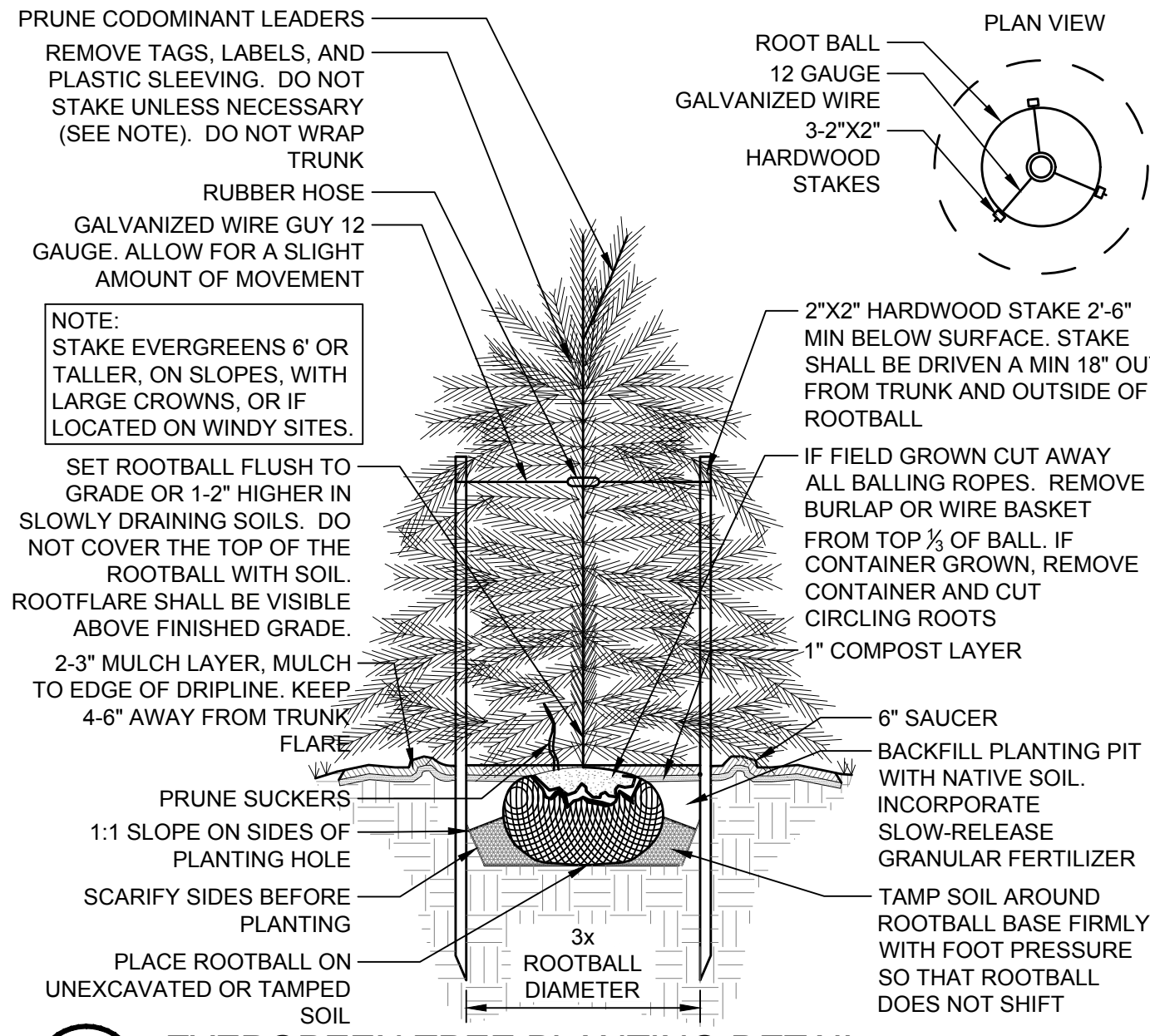
SHEET NO.
1 OF 100



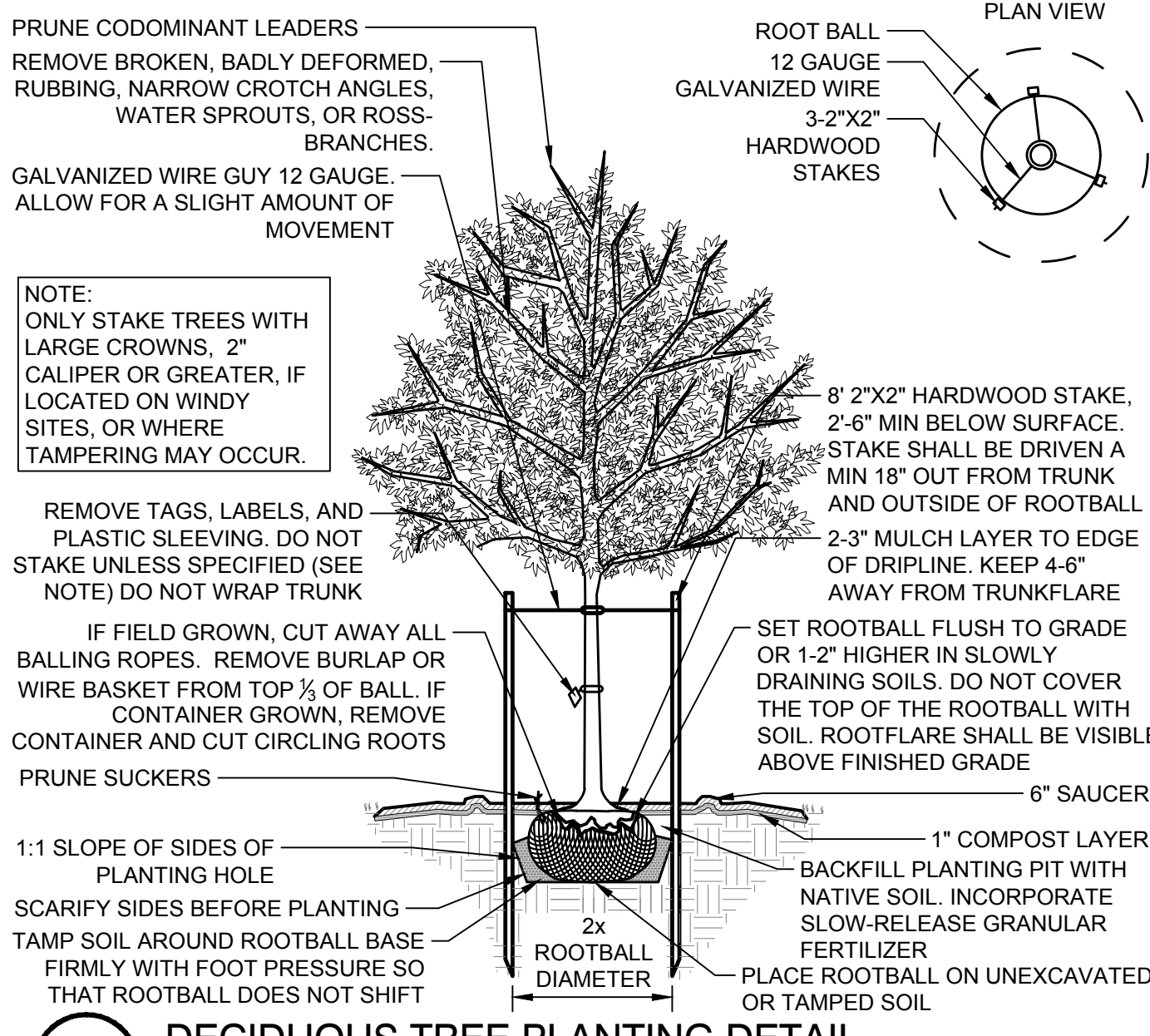
6 PLAN ENLARGEMENT
1"=20'-0"



3 SHRUB PLANTING DETAIL
NTS



4 EVERGREEN TREE PLANTING DETAIL
NTS



5 DECIDUOUS TREE PLANTING DETAIL
NTS

GENERAL NOTES

- PRE-CONSTRUCTION**
- CONTRACTOR IS RESPONSIBLE FOR CONTACTING "MISS UTILITY" AT 1.800.552.7001 FOR LOCATION OF ALL UTILITY LINES. TREES SHALL BE LOCATED A MINIMUM OF 5 FEET FROM SEWER/WATER CONNECTIONS. NOTIFY LANDSCAPE ARCHITECT OF CONFLICTS.
 - VERIFY ALL PLANT MATERIAL QUANTITIES ON THE PLAN PRIOR TO BIDDING. PLANT LIST TOTALS ARE FOR CONVENIENCE ONLY AND SHALL BE VERIFIED PRIOR TO BIDDING.
 - PROVIDE PLANT MATERIALS OF QUANTITY, SIZE, GENUS, SPECIES, AND VARIETY INDICATED ON PLANS. ALL PLANT MATERIALS AND INSTALLATION SHALL COMPLY WITH RECOMMENDATIONS AND REQUIREMENTS OF ANSI Z60.1 "AMERICAN STANDARD FOR NURSERY STOCK". IF SPECIFIED PLANT MATERIAL IS NOT OBTAINABLE, SUBMIT PROOF OF NON AVAILABILITY TO THE LANDSCAPE ARCHITECT, TOGETHER WITH PROPOSAL FOR USE OF EQUIVALENT MATERIAL.
 - PROVIDE AND INSTALL ALL PLANTS AS IN ACCORDANCE WITH DETAILS AND CONTRACT SPECIFICATIONS.
 - SOIL TESTS SHALL BE PERFORMED TO DETERMINE SOIL CHARACTER AND QUALITY. NECESSARY SOIL AMENDMENTS SHALL BE PERFORMED PER TEST RESULTS TO ENSURE PLANT HEALTH.

CONSTRUCTION/INSTALLATION

- LANDSCAPE ARCHITECT RESERVES THE RIGHT TO REJECT ANY PLANTS AND MATERIALS THAT ARE IN AN UNHEALTHY OR UNSIGHTLY CONDITION, AS WELL AS PLANTS AND MATERIALS THAT DO NOT CONFORM TO ANSI Z60.1 "AMERICAN STANDARD FOR NURSERY STOCK"
- LABEL AT LEAST ONE TREE AND ONE SHRUB OF EACH VARIETY AND CALIPER WITH A SECURELY ATTACHED, WATERPROOF TAG BEARING THE DESIGNATION OF BOTANICAL AND COMMON NAME.
- INSTALL LANDSCAPE PLANTINGS AT ENTRANCES/EXITS AND PARKING AREAS ACCORDING TO PLANS SO THAT MATERIALS WILL NOT INTERFERE WITH SIGHT DISTANCES.
- CONTRACTOR IS RESPONSIBLE FOR WATERING ALL PLANT MATERIAL DURING INSTALLATION AND UNTIL FINAL INSPECTION AND ACCEPTANCE BY OWNER. CONTRACTOR SHALL NOTIFY OWNER OF CONDITIONS WHICH AFFECTS THE GUARANTEE.

INSPECTIONS/GUARANTEES

- UPON COMPLETION OF LANDSCAPE INSTALLATION, THE LANDSCAPE CONTRACTOR SHALL NOTIFY THE GENERAL CONTRACTOR WHO WILL VERIFY COMPLETENESS, INCLUDING THE REPLACEMENT OF ALL DEAD PLANT MATERIAL. CONTRACTOR IS RESPONSIBLE FOR SCHEDULING A FINAL INSPECTION BY THE LANDSCAPE ARCHITECT.
- ALL EXTERIOR PLANT MATERIALS SHALL BE GUARANTEED FOR ONE FULL YEAR AFTER DATE OF FINAL INSPECTION AGAINST DEFECTS INCLUDING DEATH AND UNSATISFACTORY GROWTH. DEFECTS RESULTING FROM NEGLIGENCE BY THE OWNER, ABUSE OR DAMAGE BY OTHERS, OR UNUSUAL PHENOMENA OR INCIDENTS WHICH ARE BEYOND THE CONTRACTORS CONTROL ARE NOT THE RESPONSIBILITY OF THE CONTRACTOR.
- PLANT MATERIAL QUANTITIES AND SIZES WILL BE INSPECTED FOR COMPLIANCE WITH APPROVED PLANS BY A SITE PLAN REVIEW AGENT OF THE PLANNING DEPARTMENT PRIOR TO THE RELEASE OF THE CERTIFICATE OF OCCUPANCY.
- REMOVE ALL GUY WIRES AND STAKES 12 MONTHS AFTER INSTALLATION.

1 GENERAL NOTES
NTS

CONCEPT PLANT SCHEDULE

PLANT TYPE	PLANT SPECIES	QUANTITY
OVERSTORY DECIDUOUS TREES	ACER RUBRUM / RED MAPLE	9
	FAGUS GRANDIFOLIA / AMERICAN BEECH	
	QUERCUS PHELLOS / WILLOW OAK	
	QUERCUS RUBRA / RED OAK	
OVERSTORY EVERGREEN TREES	MAGNOLIA GRANDIFLORA / SOUTHERN MAGNOLIA	6
	PINUS TAEDA / LOBLOLLY PINE	
SHRUBS	ARONIA ARBUTIFOLIA / RED CHOKEBERRY	84
	CORNUS SERICEA / RED TWIG DOGWOOD	
	ILEX VERTICILLATA / WINTERBERRY	

NOTE: PLANTS IDENTIFIED IN THE PLANT SCHEDULE AND ON SHEET LP102 ARE FOR ILLUSTRATIVE PURPOSES TO SHOW DESIGN INTENT ONLY. FINAL PLANT SELECTIONS WILL BE MADE BASED ON AVAILABILITY AND FINAL DESIGN.

2 PLANT SCHEDULE

THIS DRAWING PREPARED AT THE
TIME OF OFFICE
 1054 31st St NW, Washington, DC 20007
 TEL: 202.919.2245 www.timmons.com

YOUR VISION ACHIEVED THROUGH OURS.

DATE: 12/17/2021
 DRAWN BY: S. STOCKTON
 DESIGNED BY: J. CRUZ
 CHECKED BY: T. LOWER
 SCALE: 1" = 20'

TIMMONS GROUP

THE CATHOLIC UNIVERSITY OF AMERICA
 WASHINGTON DC

BUFFER LANDSCAPE PLAN AND LANDSCAPE NOTES AND DETAILS

JOB NO. 49574
 SHEET NO. LP101

These plans and associated documents are the exclusive property of TIMMONS GROUP and may not be reproduced in whole or in part and shall not be used for any purpose whatsoever, inclusive, but not limited to construction, bidding, and/or construction staking without the express written consent of TIMMONS GROUP.



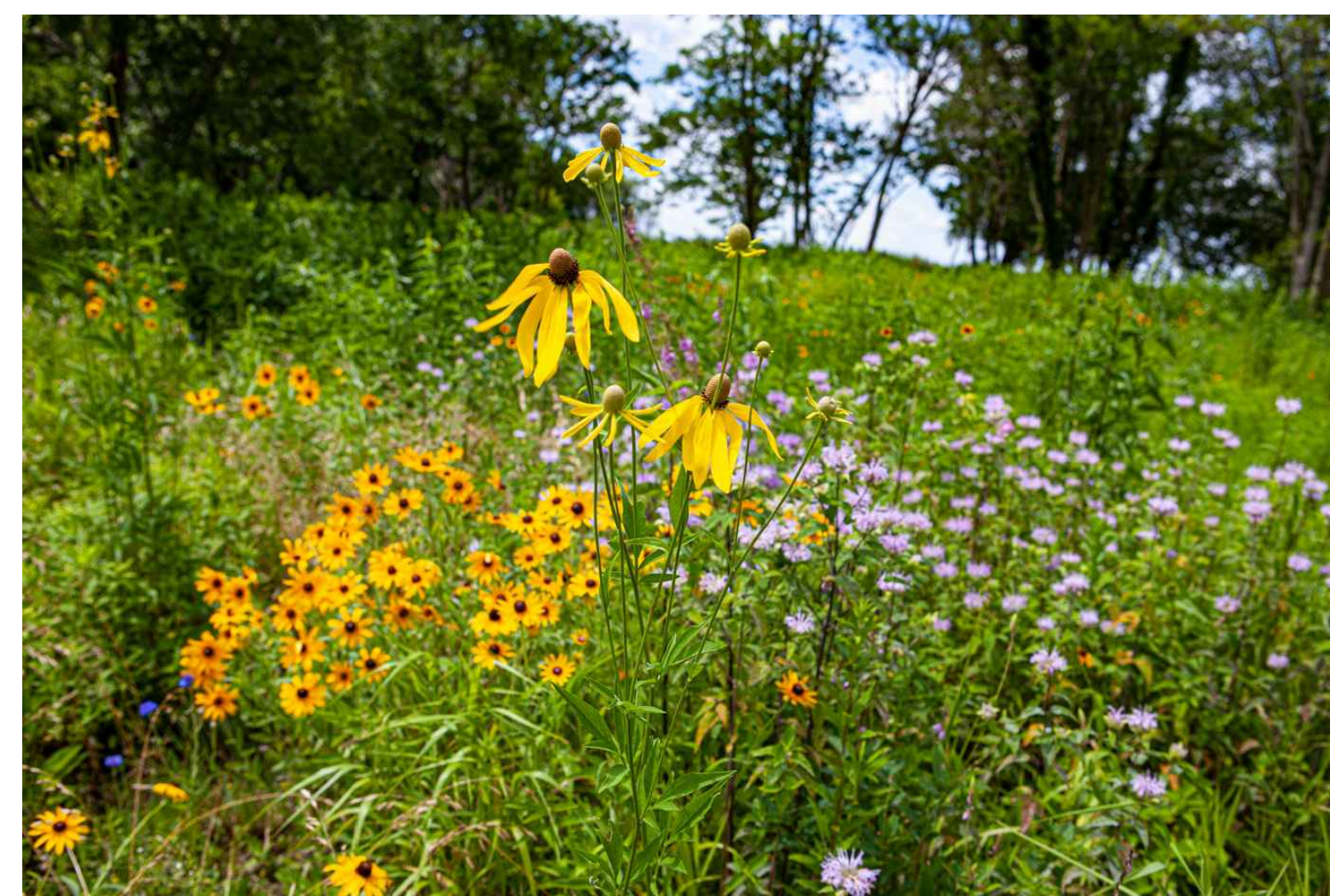
1 LANDSCAPE BUFFER - OVERSTORY DECIDUOUS TREES



3 LANDSCAPE BUFFER - SHRUBS



2 LANDSCAPE BUFFER - OVERSTORY EVERGREEN TREES



4 POLLINATOR MEADOW

S:\41048574-CUA_Solar\DWG\Sheet\Reasoning\48574-LAND.DWG | Printed on 12/17/2021 9:09 AM | by Savannah Stockton

THIS DRAWING PREPARED AT THE
TIMMONS OFFICE
 1054 31st St NW, Washington, DC 20007
 TEL: 202.9.2245 www.timmons.com

YOUR VISION ACHIEVED THROUGH OURS.

DATE
 12/17/2021
 DRAWN BY
 S. STOCKTON
 DESIGNED BY
 J. CRUZ
 CHECKED BY
 T. LOWER
 SCALE
 1" = 20'

TIMMONS GROUP

THE CATHOLIC UNIVERSITY OF AMERICA
 WASHINGTON DC

BUFFER LANDSCAPE IMAGES

JOB NO.
 49574
 SHEET NO.
 LP102

These plans and associated documents are the exclusive property of TIMMONS GROUP and may not be reproduced in whole or in part and shall not be used for any purpose whatsoever, inclusive, but not limited to construction, bidding, and/or construction staking without the express written consent of TIMMONS GROUP.